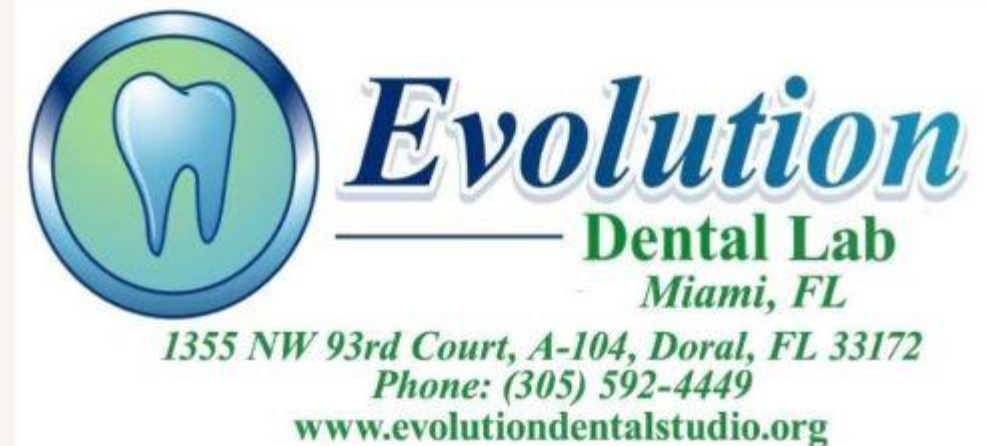


# Evolution Dental Lab Miami Miami

# Digital Dentistry Partnership Program Program

Transforming Miami dental practices through cutting-edge digital solutions and personalized partnership support





# The Future Is Digital

## Industry Transformation

Over 70% of modern practices are transitioning to digital workflows, setting new standards for efficiency and precision

## Patient Preference

Today's patients overwhelmingly prefer digital impressions over traditional methods for comfort and accuracy

# Challenges with Traditional Impressions



## Material Distortion

Traditional impression materials are prone to dimensional changes, tearing, and inaccuracies that compromise restoration fit

## Costly Remakes

Impression errors lead to ill-fitting restorations, requiring expensive remakes and additional patient appointments

## Extended Turnaround

Shipping physical impressions and waiting for corrections significantly delays case completion and patient satisfaction

# Advantages of Digital Workflow



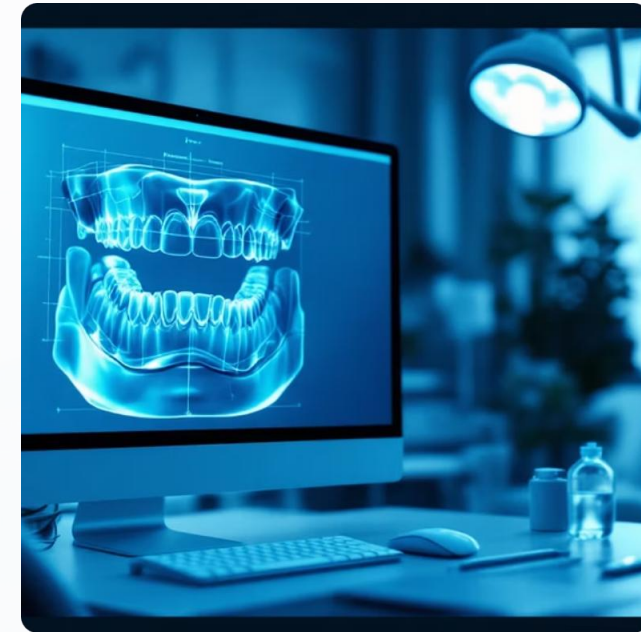
## Unmatched Precision

Digital impressions capture minute details with micron-level accuracy, ensuring perfect-fitting restorations every time



## Accelerated Speed

Instant digital file transfer eliminates shipping delays, reducing turnaround time from weeks to days



## Complete Predictability

Digital workflows provide consistent, reproducible results with real-time quality verification before production begins



# Why Partner with Evolution Dental Lab?



## Local Digital Expertise

Miami-based lab with advanced CAD/CAM technology and deep understanding of local practice needs



## Dedicated Communication

Direct access to technicians and support staff who understand your cases and respond promptly



## Competitive Pricing

Transparent, fair pricing structure designed to maximize your practice profitability



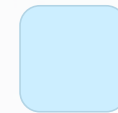
## Reliable Turnaround

Consistent delivery schedules you can depend on, keeping your patients happy and your schedule flowing

# Exclusive Scanner Program

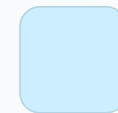
## Partnership Benefits

We empower practices to seamlessly transition into digital dentistry. Through our program, we eliminate the high upfront investment and complex learning curves, making advanced technology both accessible and affordable. This partnership unlocks greater efficiency, precision, and patient satisfaction for your practice.



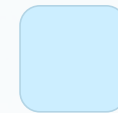
### Reduced Investment

Minimal upfront costs with flexible terms that fit your practice budget



### Monthly Case Commitment

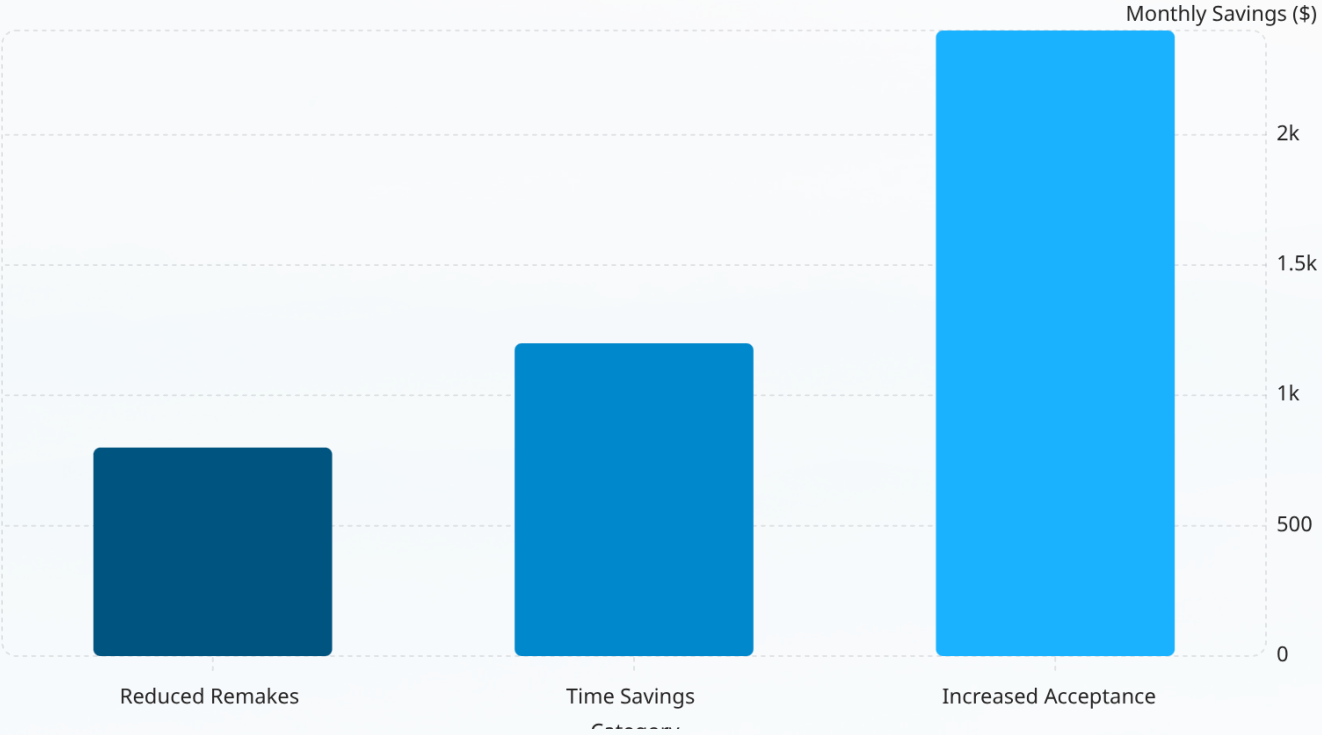
Straightforward volume agreement ensures mutual success and predictable lab partnership



### Priority Lab Support

Scanner program partners receive expedited processing, technical assistance, and dedicated account management

# Financial Example: Clear ROI



## Real Numbers, Real Impact

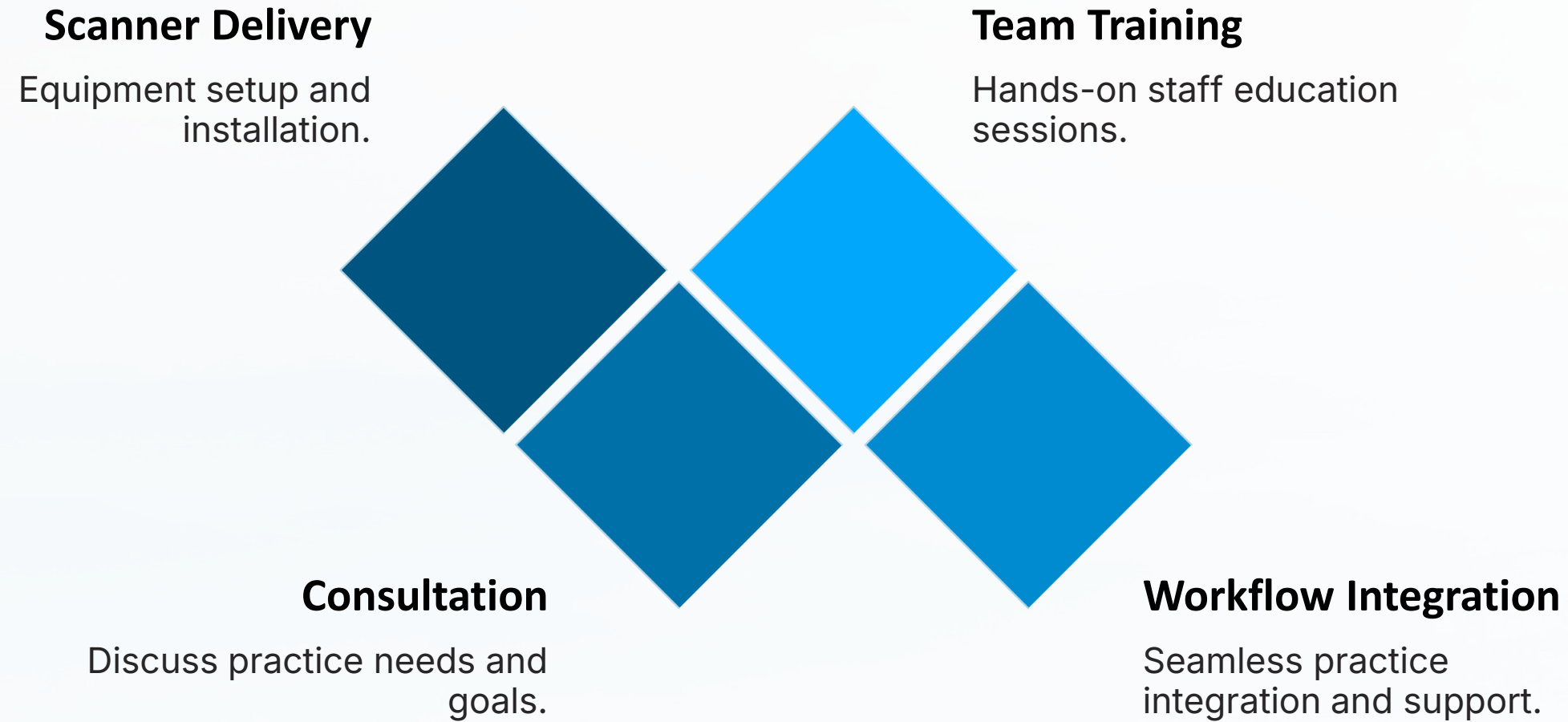
Based on just 10 crown cases per month:

- Save \$800+ monthly on remake elimination
- Gain \$1,200 in chair time efficiency
- Earn \$2,400 more from improved case acceptance

**Total monthly benefit: \$4,400+**

Most practices achieve full ROI within 3-4 months of implementation

# Implementation Process



Our streamlined onboarding process ensures your team is confident and productive from day one, with ongoing support throughout your digital journey

# Success Stories



*"Evolution Dental Lab transformed our practice. Digital impressions improved our accuracy and our patients love the experience. The ROI was evident within the first quarter."*

— Dr. Martinez, Coral Gables Family Dentistry



*"The scanner program removed the financial barrier we were facing. Their support team is always available and the turnaround times are exceptional."*

— Dr. Johnson, Miami Beach Dental Associates



**45%**

**Faster Turnaround**

Average reduction in case completion time

**92%**

**Partner Satisfaction**

Practices rate our service excellent

**3.2x**

**ROI Multiple**

Average return on digital investment



# Let's Build a Long-Term Digital Partnership

Ready to elevate your practice with digital dentistry? Our team is here to answer your questions and design a partnership program tailored to your specific needs.

**Call Us Today**

**(305) 592-4449**

**Email Our Team**

[luz@evolutiondentalstudio.org](mailto:luz@evolutiondentalstudio.org)

**Evolution Dental Lab Miami — Your Partner in Digital Excellence**